

Who we are

Comprehensive Community Action, Inc. was created in 1965 as a result of President Lyndon Johnson's War on Poverty. The agency was designed to mobilize local residents towards the elimination of poverty.

Comprehensive Community Action's federal catchment area includes Cranston, Coventry, Scituate and Foster. However, some of our programs serve residents living in Johnston, North Providence, Smithfield, North Smithfield, Glocester, Burrillville, Providence, Warwick, West Warwick, East Greenwich, Exeter and West Greenwich. Some programs are statewide.

Our philosophy centers on addressing basic human needs – food, shelter and clothing. Beyond that, other needs are addressed by programs and services provided by one of CCAP's four components:

- Family Health Services
- Social Services
- The Doric Center
- Child Development Center

Call 467-9610 for more information about any of our programs and services



PROGRAM PARTNERS

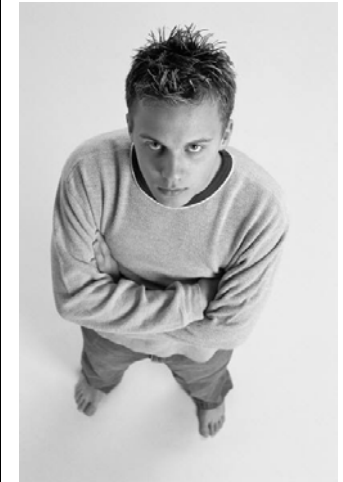
- Westbay Community Action
- Salve Regina University– Social Work Department
- URI Community Research & Services Team
- RI Department of Mental Health, Retardation & Hospitals
- Juvenile Hearing Boards of:
 - Coventry
 - Cranston
 - East Greenwich
 - Warwick
 - West Warwick



This program is funded by a grant from the Rhode Island Department of Mental Health, Retardation & Hospitals' Division of Behavioral Healthcare Services

Helping People ♥ Changing Lives

PARENTING ADOLESCENTS WISELY PROGRAM



CCAP

*Comprehensive
Community
Action Programs*

CCAP is accredited by the Joint Commission on Accreditation of Healthcare Organizations

Helping People ♥ Changing Lives

311 Doric Avenue Cranston, RI 02910
467-9610
www.comcap.org

The Parenting Wisely & Behavioral Family Therapy Program



CCAP has been awarded a *Safe and Drug Free Schools and Communities* grant from RI MHRH's Division of Behavioral Healthcare Services to replicate a SAMHSA Model

Program – *Parenting Wisely (American Teen Version)*. In addition we will supplement this program model with a proven SAMHSA effective program – *Behavioral Systems Family Therapy*.

Parenting Wisely (American Teen) is an interactive CD-ROM program designed for parents of adolescents and pre-adolescents (ages 8-18). *Parenting Wisely (American Teen)* requires parents to have neither previous computer experience nor the ability to read (the computer reads all text aloud).

Behavioral Systems Family Therapy is a behavioral family therapy approach used for at-risk youth between the ages of 6 and 18 years. It will reduce the risk factors and increase the protective factors in four areas: Individual/Peer, Family, School and Community. The program will serve youth and their

families referred from Juvenile Hearing Boards (JHBs) and/or Truancy Courts in the communities of Cranston, Coventry, Warwick, West Warwick and East Greenwich. It is anticipated that the program will serve 40 youth and their families per year. Many youngsters referred to the JHBs are at risk for poor school attendance/performance, family problems, substance abuse, gang membership, violence and delinquent behavior.

Who can refer teens and families to this program?

Because of the limited number of families we can serve, we will accept referrals only from Juvenile Hearing Boards and/or Truancy Courts in Cranston, Coventry, East Greenwich, Warwick, and West Warwick.



Who Should be referred to this program?

Determining the best and most appropriate level of treatment for an at-risk adolescent is not a simple task. Too often families, courts, police departments and schools are overwhelmed with the number of teens in need of help. This program is for teens who are at the lower end of the problem severity continuum. It is for families with children who are at minimum to moderate risk for becoming delinquent, especially during the

middle school transition years.

Is participation in the program voluntary?

Yes, although the JHBs and Truancy Courts may mandate involvement in the program, both the teen and the family have to agree to fully participate. Participation may involve just the *Parenting Wisely* program or a combination of *Parenting Wisely* and *Behavioral Family Therapy* as well as groups for parents and teens. Families must agree to sign a release of information so that progress can be reported to the JHBs and/or Truancy Courts. Families will also be asked to participate in a program evaluation project.

Is there a cost to the family to participate in the program?

No, as long as families are referred by the Juvenile Hearing Board in their community all services are provided at no cost.

How can I learn more about this program?

For more information about this or other CCAP programs and services, please call Annie Geddis at 467-9610.

